



WALKER | MACY

CCC CONCEPT MASTER PLAN

PRESIDENTS' COUNCIL MEETING

06.07.2022

PROJECT GOALS:

PLANNING FOR THE FUTURE



**VISION AND
DIRECTION FOR
CAMPUSES**



**10-YEAR GROWTH/
CHANGE**



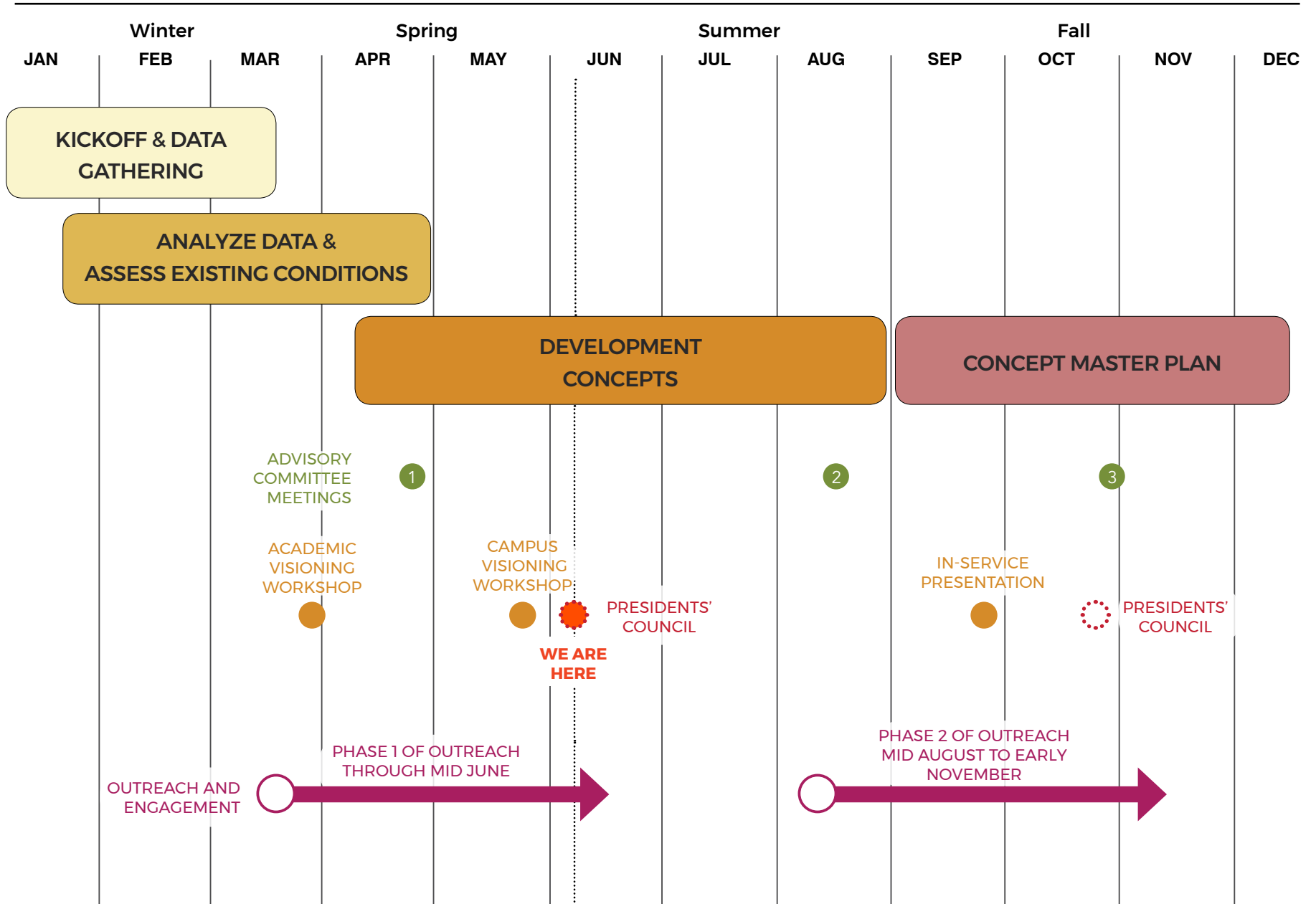
**FURTHER EQUITY
& SUSTAINABILITY**



**ADAPT FOR
FUTURE LEARNING**

CONCEPT MASTER PLAN SCHEDULE

2022

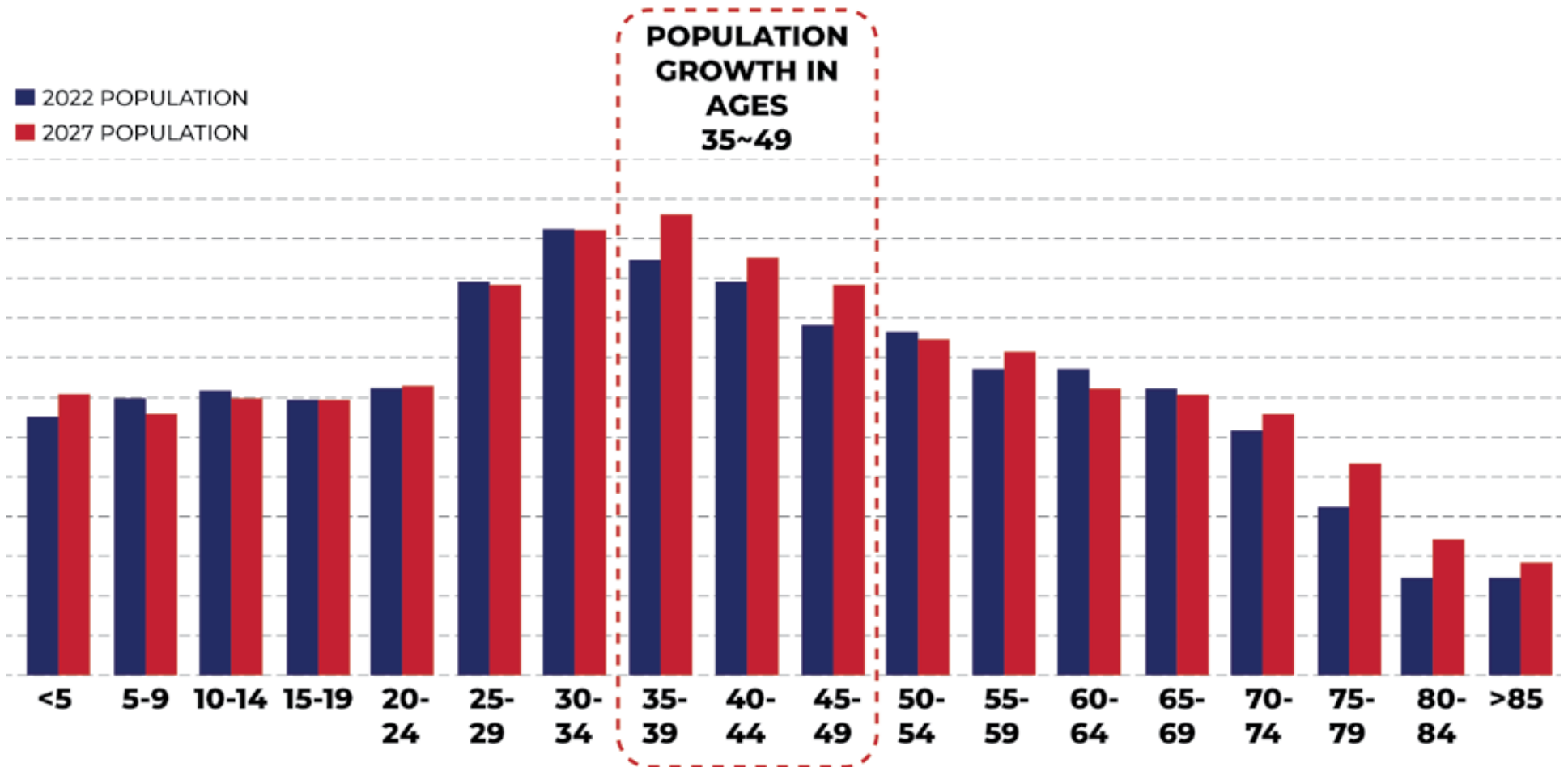


10-YEAR OUTLOOK FOR PROGRAMS

Programs may **change, expand, or contract**

Opportunities to reach **diversifying student demographics**

Opportunities for **non-traditional offerings** (e.g. pre-apprenticeship, short-term training, layered credentials)



Source: U.S. Census (15-mile radius from Oregon City, OR)

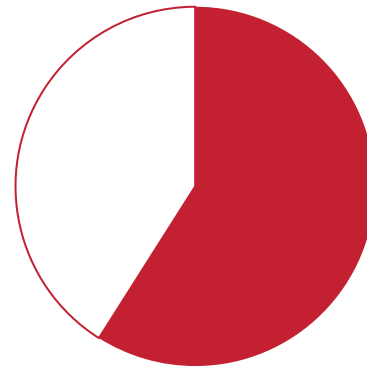
10-YEAR WORKFORCE DEMAND

PROGRAM AREA X



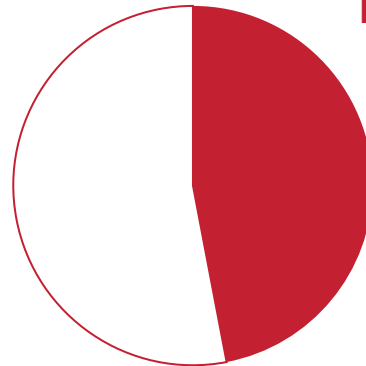
STUDENT BASIC NEEDS: AFFORDABLE HOUSING

OUT OF 843 SURVEYED CCC STUDENTS:



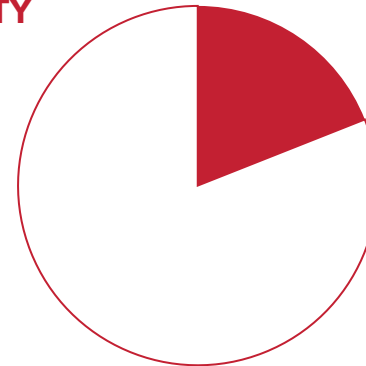
59%

EXPERIENCED BASIC
NEEDS INSECURITY



47%

EXPERIENCED
HOUSING
INSECURITY



19%

EXPERIENCED
HOMELESSNESS
IN THE LAST 12 MONTHS

FALL 2019 CLASSROOM UTILIZATION (OREGON CITY CAMPUS)

- There was surplus classroom space pre-COVID, and more surplus is likely with future learning styles.

Weekly Room Hours

Guideline: **30**



ccc: **18.6**



Weekly Classroom Utilization Rate

Average: **82%-88%**



ccc: **67%**



Weekly Seat Fill Rate

Guideline: **70%**



ccc: **54%**

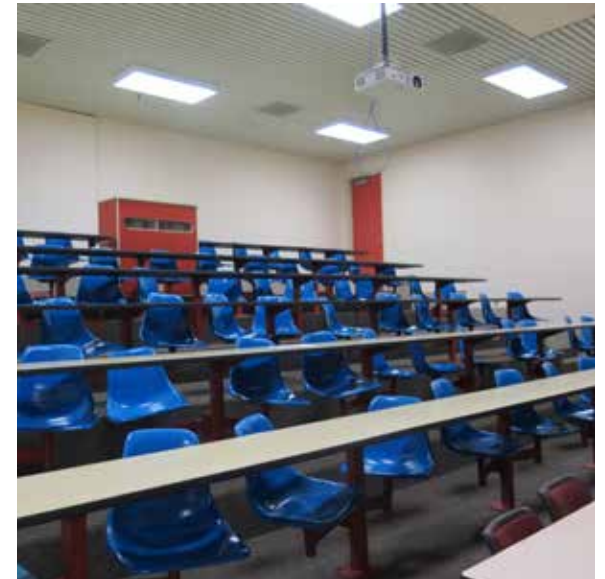


FALL 2019 CLASSROOM UTILIZATION (OREGON CITY CAMPUS)

- Smaller classrooms were especially underutilized and could be repurposed.



- Larger classrooms had low seat fill and could provide more space per student to adapt to omnichannel learning or collaborative / group learning.



SCENARIOS FOR FUTURE LEARNING STYLES

**FULLY
ONLINE**

**HYBRID/
HYFLEX**

**FULLY IN-
PERSON**

A

44%

10%

46%

B

30%

30%

40%

C

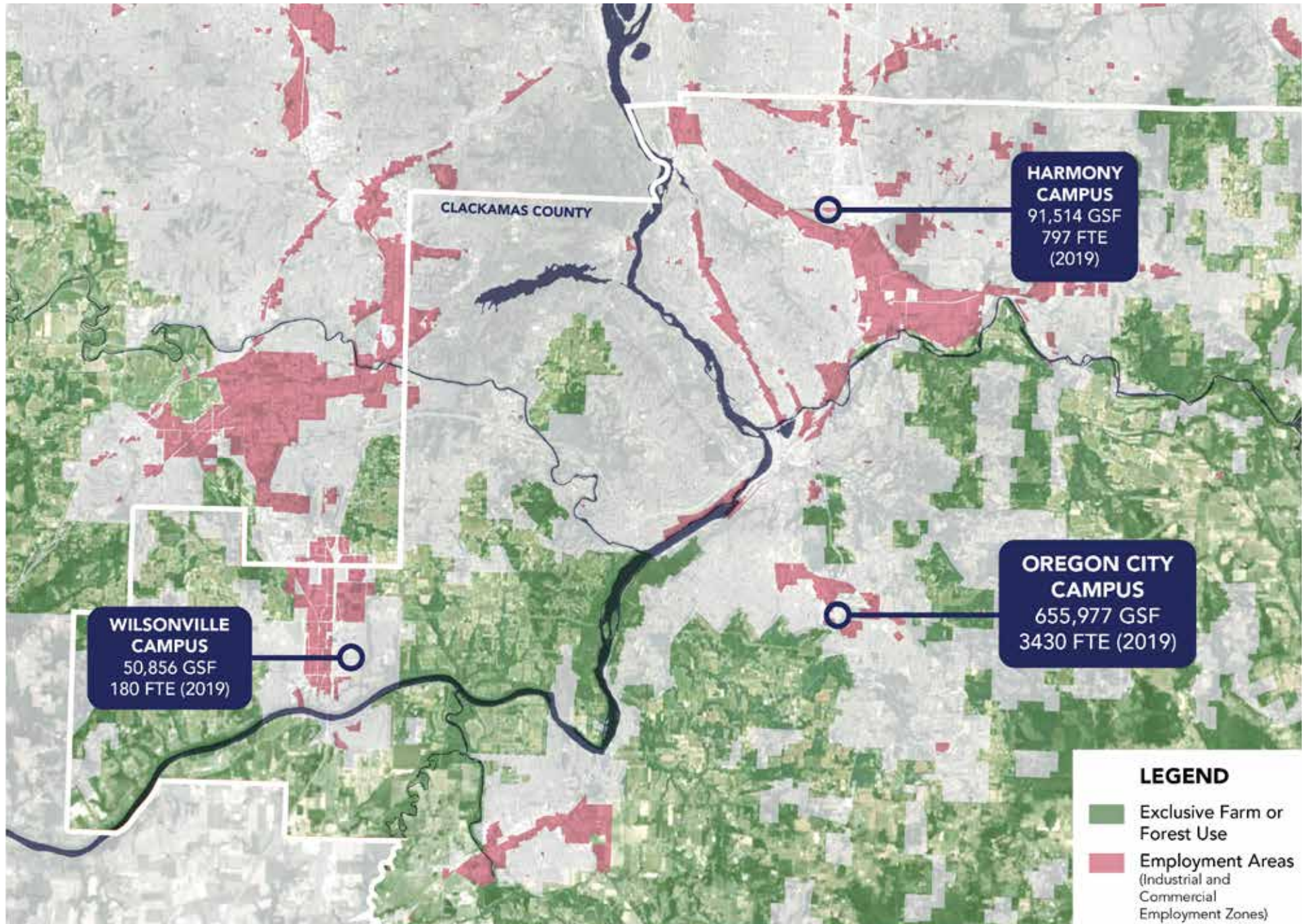
25%

45%

30%



CLACKAMAS COMMUNITY COLLEGE DISTRICT



DISTRICT-WIDE THEMES

- Coordinate events, activities, and programming between the three campuses
- Support and welcome a diverse student body and provide a sense of belonging and connection
- Provide welcoming space for indoor and outdoor activities
- Express CCC identity
- Connect with community
- Connect with employers
- Offer a balance of education and training
- Support multiple learning modalities



HARMONY CAMPUS: THEMES

- Continue development as a full campus serving as an outreach point for the college in north Clackamas County
- Expand healthcare, general education, and community-facing programs
- Create a clear campus entry from Harmony Rd
- Create an accessible and pedestrian-friendly campus with safe connections to its surrounding natural and built context
- Improve student-supportive spaces with food and informal gathering



OREGON CITY CAMPUS: THEMES

- Continue as central academic and administrative hub
- Provide informal gathering and support spaces equitably across the campus
- Enhance campus role as community amenity/resource
- Expand on-site connections with industry and workforce training
- Improve outdoor learning and gathering opportunities
- Improve aging buildings to better support hybrid learning
- Create an interconnected campus with a strong core



WILSONVILLE CAMPUS: THEMES

- Strengthen CCC campus identity distinct from PGE or other partners
- Potential to create “Center of Excellence for Professions and Trades”
- Explore future opportunities for business/industry and community partnerships
- Expand general education offerings
- Strengthen connections with school district



STUDENT INPUT

clothing closet space along with food pantry

spaces to connect and have a sense of community

another activity/game space somewhere else on campus (outside Wacheno)

spaces to take calls/ZOOM with technology

more physical accessibility

break up the concrete with more green space

ensure practical/optimized study spaces (big enough, meeting needs)

IF YOU WERE DOING A 10 YEAR PLAN TO MAKE CAMPUS BUILDINGS AND OUTDOOR SPACES MORE SUPPORTIVE, INCLUSIVE, AND WELCOMING FOR FUTURE STUDENTS...
WHAT KINDS OF SPACES WOULD YOU MAKE SURE TO INCLUDE OR IMPROVE?

DeJardin window space is ideal

device charging, infrastructure for technology

more quiet spaces for study/work /downtime

rest between classes/com mutes/etc

"serenity garden", walking, sitting, etc.

more benches in social orientation

more trees and green!

more covered outdoor spaces

separate performance space / space for activities

Wacheno closes around 4-5, would be nice to be open longer

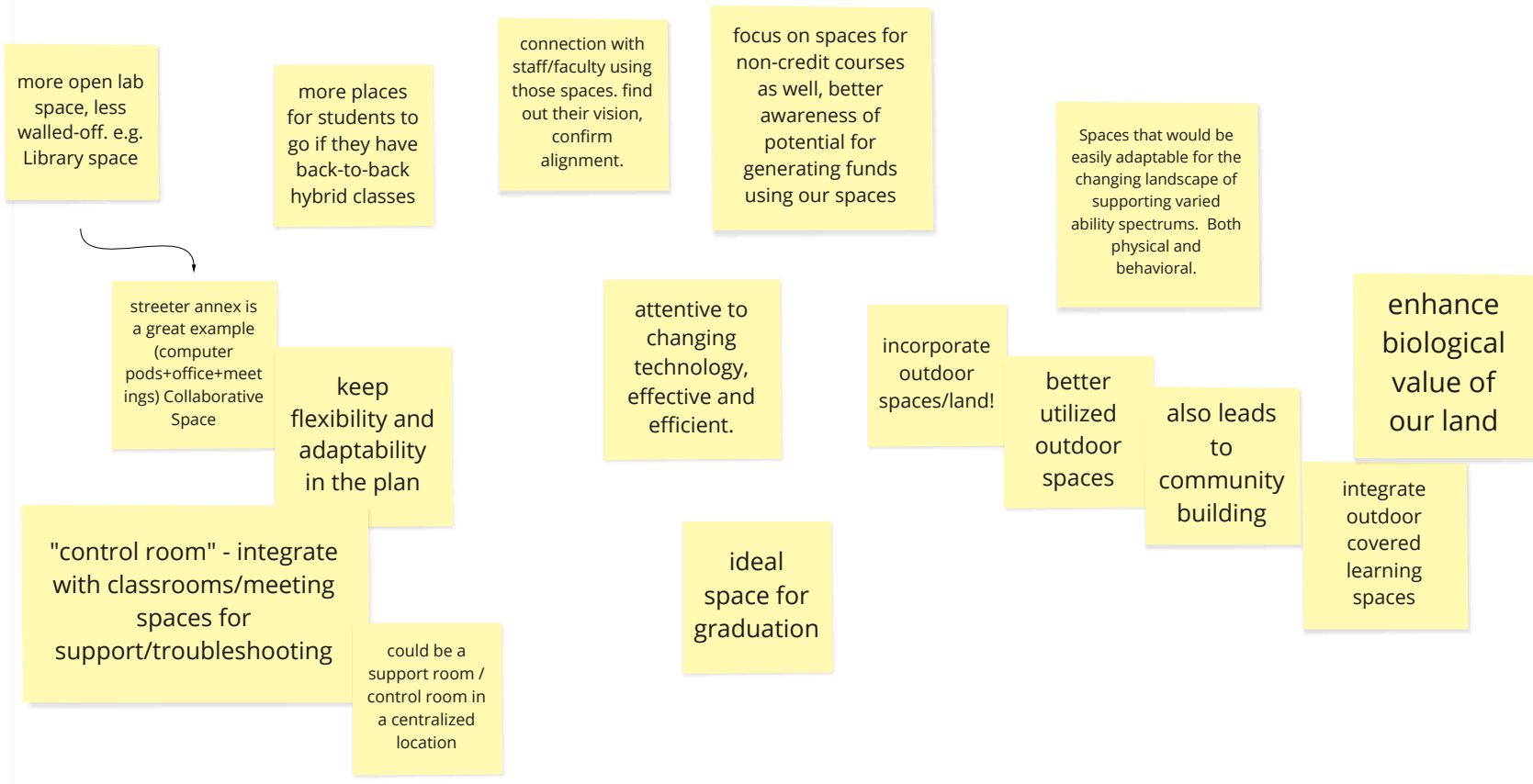
more indoor spaces that are open on off-hours (weekends, evenings)

CCC CONCEPT MASTER PLAN

ASG MEETING 5.11.2022

EMPLOYEE INPUT - ADVISORY COMMITTEE

A 10-YEAR PLAN THAT SUCCESSFULLY AND EQUITABLY PREPARES CCC'S FACILITIES FOR FUTURE LEARNING STYLES **WOULD INCLUDE...**



CAMPUS VISIONING SURVEY

A **15-minute survey** is currently open for **students, employees, and community members** to give feedback and share ideas about each campus:

https://clackamas.co1.qualtrics.com/jfe/form/SV_9oyTtCg9umHwxfg



*OREGON CITY
CAMPUS*



*HARMONY
CAMPUS*



*WILSONVILLE
CAMPUS*

DISCUSSION

WHAT IS MOST IMPORTANT TO INCLUDE IN THE COLLEGE'S 10-YEAR PLAN?

